



OUR SERVICE

- Supply of Pipes, Fittings, and Flanges.
 - Supply of Instrumentation Tubing and Fittings
 - Fabrication of Tanks and Piping Spools
 - Fabrication of Structural Items. (SS & CS)
 - Pipe Supports, Ladders, Air Vents & Granting
 - Site Work Services (Piping & Structural)
 - Design & Engineering Support
-



teel Corners

Steel Corners for Operation and Maintenance L.L.C

ABOUT US

We are SCCOM—a leading fabricator, stockholder, and supplier of stainless steel, carbon steel, ductile iron, alloy metals, duplex and super duplex steel, as well as PPR and HDPE piping products—operating across Saudi Arabia and Jordan. Backed by the industry's finest resources, we deliver reliable solutions that meet the evolving demands of modern infrastructure and industrial markets.

We supply high-quality products to major clients across diverse industrial sectors, including oil ports. Our expertise spans the design and fabrication of carbon steel (CS) and stainless steel (SS) storage tanks, pressure vessels, piping spools, puddle flanges, and heavy structural works for all types of industries. We offer competitive pricing without compromising on quality—ensuring customer satisfaction and long-term reliability.

MISSION

At SCCOM, our mission is to deliver the highest quality stainless steel products and services to our clients. We are committed to providing exceptional value through a comprehensive range of fabrication, stocking, and supply solutions—tailored to meet the unique requirements of each project. Our focus is on building lasting relationships with customers, suppliers, and employees, grounded in trust, integrity, and mutual respect.

VISION

Our vision at SCCOM is to become the premier provider of stainless steel products and services in the industry. We aspire to be recognized for our innovative solutions, exceptional quality, and customer-centric approach. By continuously improving our processes and investing in our people, technology, and infrastructure, we aim to drive growth and profitability. Our ultimate goal is to build a sustainable business that creates lasting value for our clients, empowers our workforce, and contributes meaningfully to industrial development across the region.



OUR CLIENTS



الشركة السعودية للكهرباء
Saudi Electricity Company

أرامكو السعودية
saudi aramco



سابك
SABIC



SWCC
المؤسسة العامة لتحلية المياه المالحة
Saline Water Conversion Corporation

MA'ADEN
معادن



شركة المياه الوطنية
National Water Company



أسترا للإنشاءات
ASTRA CONSTRUCTION



نيوم NEOM

مسار
M A S A R

مسار
شركة أم القرى للتنمية والإعمار

الرياض
الرياض الخضراء
GREEN RIYADH

حديقة الملك سلمان
King Salman Park

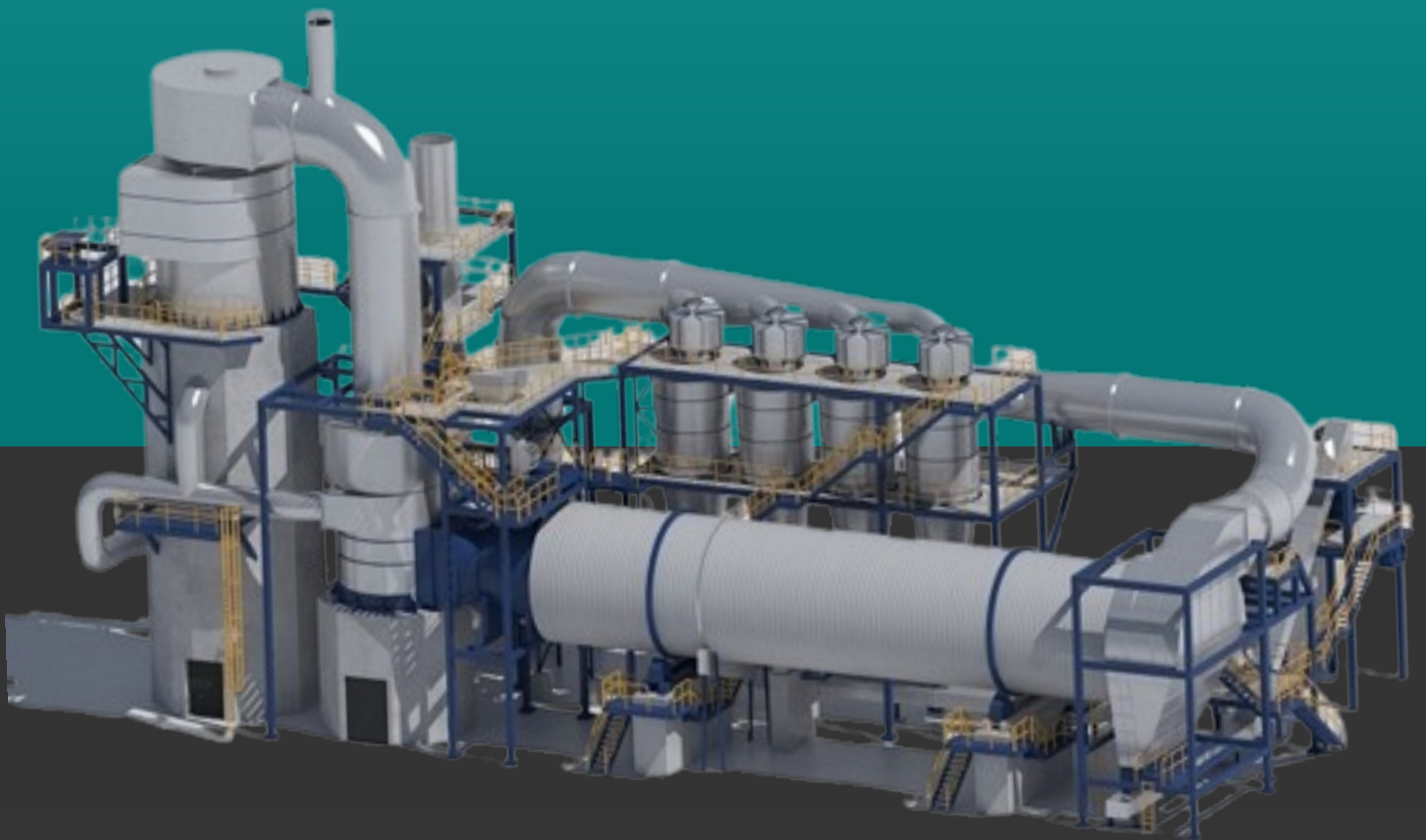


At Steel Corner, we take pride in partnering with a diverse range of clients across industries including construction, infrastructure, energy, and manufacturing. Our commitment to quality, precision, and reliability has earned the trust of leading contractors, developers, and government agencies. Whether it's a small-scale custom project or a large industrial contract, we deliver steel solutions that meet the highest standards.

Our Long-standing relationships reflect our unwavering commitment to excellence, on-time delivery and customer satisfaction.

SERVICES

- SUPPLY
- INSTALLATION
- FABRICATION
- OPERATION & MAINTENANCE
- PLANT SERVICES



LIST OF SECTIONS

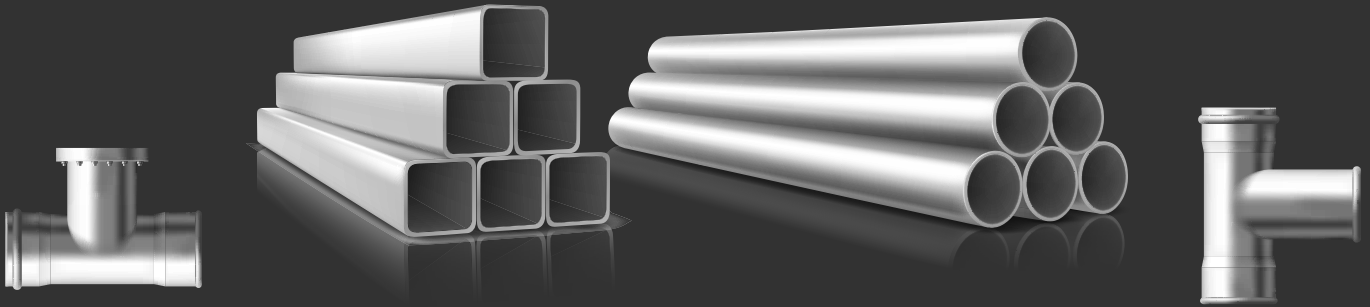
- STAINLESS STEEL PIPES (SEAMLESS & WELDED).
- CARBON STEEL PIPES (SEAMLESS & WELDED).
- CARBON & STAINLESS STEEL FLANGES, DISMANTLING JOINTS.
- INSTRUMENTATION FITTINGS.
- DUPLEX & SUPER DUPLEX MATERIALS.
- STAINLES STEEL & CARBON STEEL FITTINGS.
- STEEL FABRICATION (CS & SS).
- VALVES.





PIPES AND TUBES

We SCCOM are the largest stockiest and supplies/offering wide range of seamless welded pipes in all grades and maintaining stocks specially for SS, CS, Duplex



ITEM	GRADE	SIZE	MANUFACTURER
CS PIPES	A53, A106, API 5L GR. A, B, C X42, X52, X60, X65, X70 A333 GR.3, 6	1/2"- 24"(SMLS) 1/2"- 16"(ERW) 16"-96" (SAW)	SUMITOMO, US STEEL INTERPIPE, ARCELORMETAL, SSP JAZEERA PIPE, TUBOS, PCK, BAOJI
SS PIPES	A312, A358, GR.304,304/L 316, 316/L, 321/L, 904L	1/2"- 24"(SMLS) 1/2"- 96" (ERW/EFW)	TSINGSHAN STEEL PIPE TUBACEX ARMETAL, FROCH
CS PIPES	ASTM A335, GR. P5, P9, P11, P22, P91	1/2"-96" (WLD/SMLS)	TUBOS, SUMITOMO, TENARIS
DUPLEX & SUPER DUPLEX PIPES	A790, UNS S31803, UNS S32750, S32760	1/2"-24" (SMLS) 1/2"-96"(WLD)	TUBACEX, SANDVIK
SS TUBES	316/L, 304/L, 321/L, 904/L	1/8"- 2", 6MM 50.8MM	SANDVIK, CENTRAVIS TUBACEX

FORGED & BUTT WELD FITTING

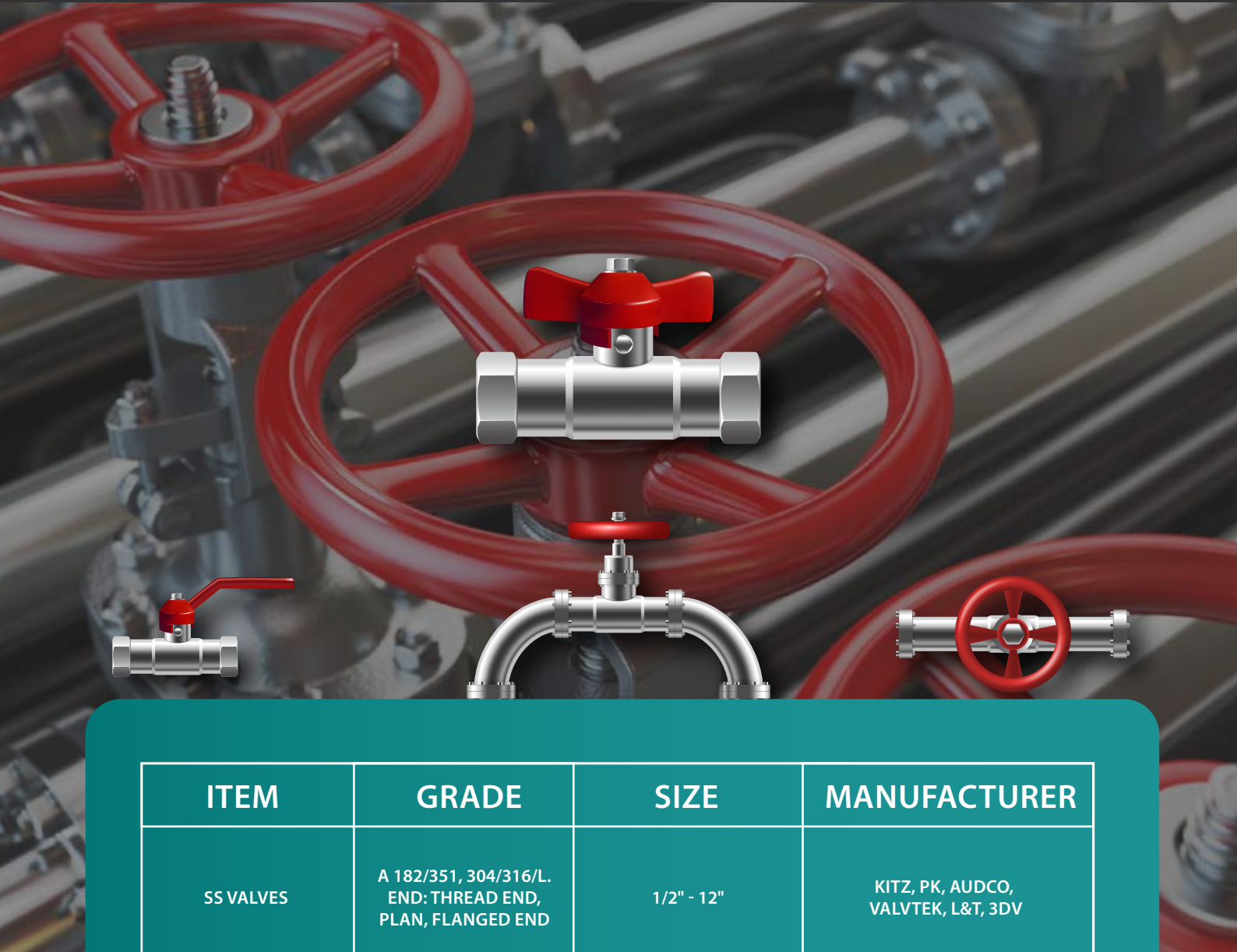
SCCOM is a leading fabricator, stockholder, and supplier of metallic products, offering a wide range of solutions tailored to meet the unique needs of our customers. Our forged and butt weld fittings reflect our commitment to quality and excellence. We provide a comprehensive selection of fittings—including elbows, tees, reducers, caps, and stub ends—available in various sizes, grades, and specifications.



ITEM	GRADE	SIZE	MANUFACTURER
CS FLANGES WNRF, SORF, THRF, SWRF, BLRF	ASTM A105 ASTM A350 (LOW TEMPERATURE SERVICE) CL150, 300, 600. EN1092-1 PN10, PN16, PN25	1/2" - 96"	TSINGSHAN STEEL PIPE, ULMA, METALFAR, PFF, KOFKO
CS FLANGES WNRF, SORF, THRF, SWRF, BLRF	ASTM A182 304, 304L 316, 316L, 321/L, 904/L, CL150, 300, 600. EN1092-1 PN10, PN16, PN25	1/2" - 96"	TSINGSHAN STEEL PIPE ULMA, VIRAJ, METALFAR, MELASI

VALVES

We at SCCOM are one of the largest stockists and suppliers of seamless and welded pipes across all major grades. We maintain extensive inventories, with a special focus on stainless steel (SS), carbon steel (CS), and duplex materials, ensuring prompt availability and reliable delivery for diverse industrial applications.



ITEM	GRADE	SIZE	MANUFACTURER
SS VALVES	A 182/351, 304/316/L. END: THREAD END, PLAN, FLANGED END	1/2" - 12"	KITZ, PK, AUDCO, VALVTEK, L&T, 3DV
CS VALVES	ASTM: A105/216, WCB	1/2" - 72"	WEFLO - CHINA
DUCTILE IRONVALVES	ASTM A126, CLASS B	1/2" - 4"	WEFLO- CHINA

VALVE 4



VALVE 5



VALVE 6



VALVE 3



VALVE 1



VALVE 2



VALVE 3



TYPES OF TANKS WE PROVIDE

Storage tanks, mixing tanks, floating roof tanks, pressure vessels, and heavy structural components are vital elements in industrial processes. These units are available in a wide range of sizes and configurations to suit diverse operational needs. Whether storing chemicals, water, or other liquids, selecting the appropriate tank size is crucial for safety, efficiency, and cost-effectiveness. Compact tanks are ideal for space-constrained environments, while larger tanks are designed for high-volume storage and processing. Tank size directly influences cost, with larger units typically requiring more material and fabrication effort. Whatever your requirements, there is a tank solution tailored to meet specific application.




STEEL & PIPE FABRICATION AND INSTALLATION

SCCOM is well-equipped to deliver high-quality steel, pipe fabrication, and installation services across Saudi Arabia, serving a wide range of industries including chemical plants, food processing facilities, STPI units, oil mining operations, petroleum piping networks, petrochemical complexes, and refinery plants.

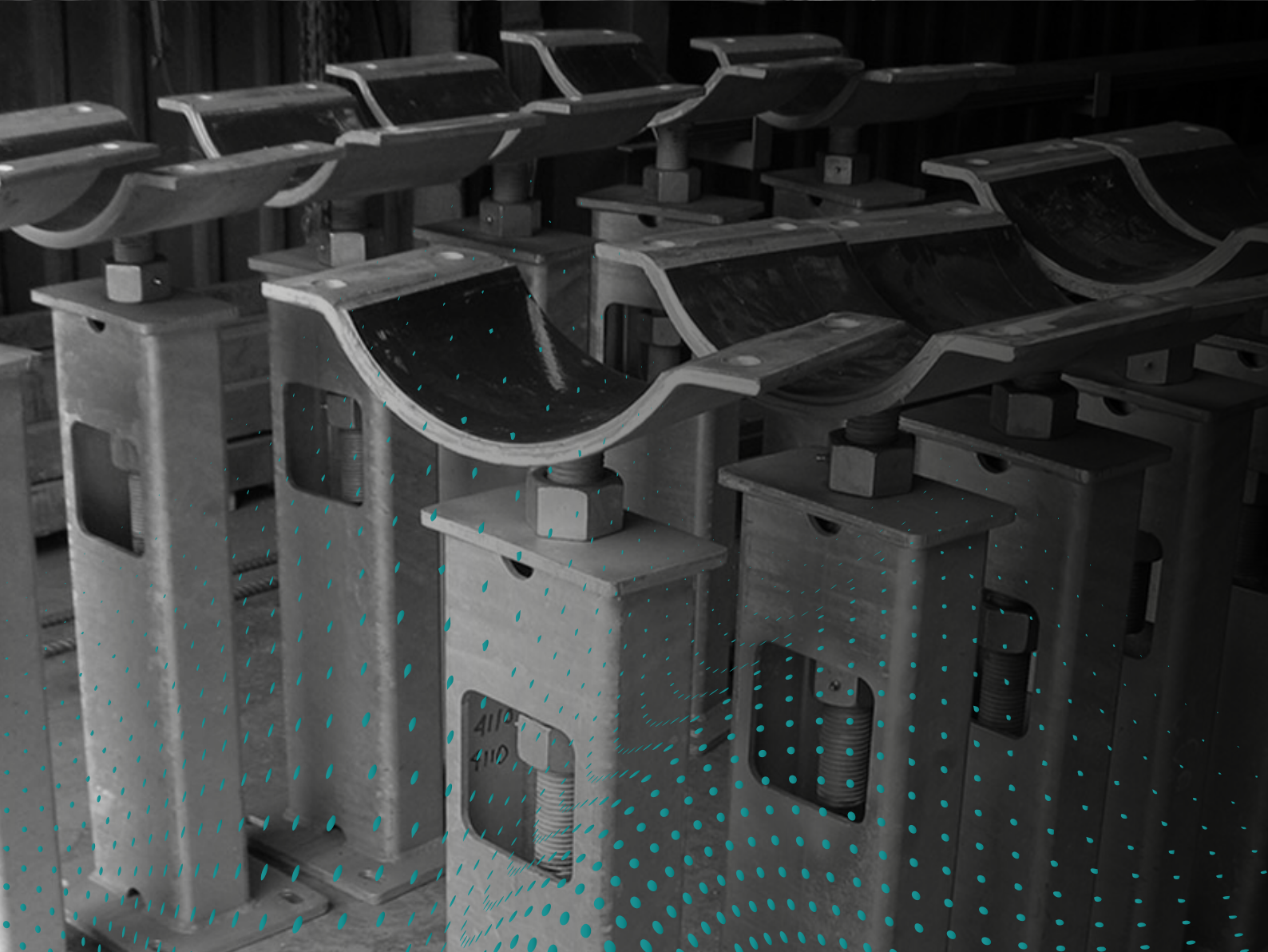
Piping installation—or erection—refers to the systematic laying and assembly of piping systems and their associated accessories to enable fluid transfer. This critical phase follows piping fabrication, where pipe spools are precisely cut and prepared in our fabrication shop according to project specifications. These prefabricated spools are then transported to the site for final assembly, guided by isometric drawings or general arrangement layouts. Adhering to relevant codes and standards during installation ensures operational safety, system integrity, and long-term performance.





CS

PRODCUTION





STRUCTURAL WORK



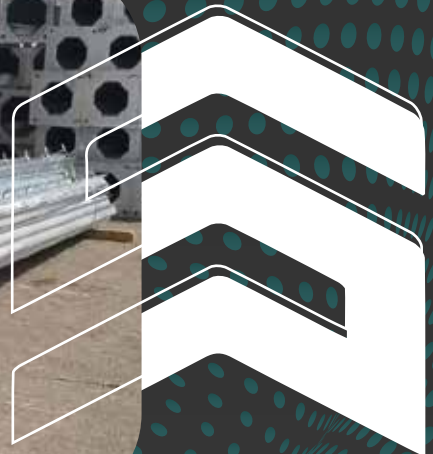
CAGE LADDER



CHANNEL FRAME



GALVANIZED MATERIAL



HANDRAILS



PIPE SUPPORTS



STAIR CASE



ANGLE BAR



BOLLARDS



CABLE TRAY



CAGE LADDER



SMALL TANK

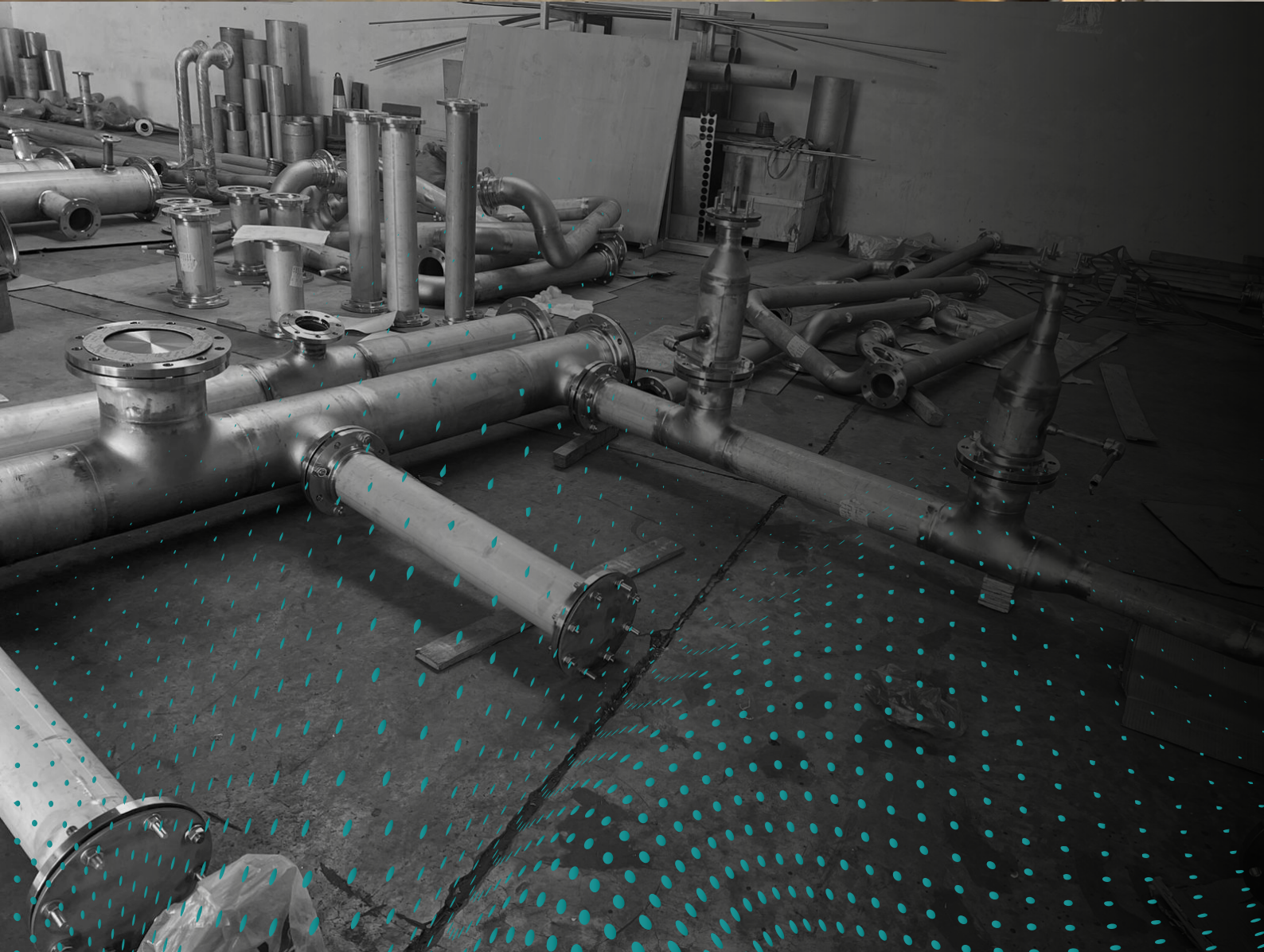


PUDDLE GLANGE





SS PRODCUTION



PIPE SPOOLS



PIPE SUPPLY



FLANGE SUPPLY



SS VALVE



VORTEX



SS VORTEX



HYDRO TEST SPOOLS



RT TEST SPOOLS



HYDRO TEST



PIPE SPOOL PT TEST



PIPE SPOOL



PIPE SPOOL



PIPE SPOOL



TANK



TANK



TANK





**“WHERE STRENGTH MEETS PRECISION
WE SHAPE THE FUTURE”**

MACHINERY & EQUIPMENTS

WELDING MACHINE



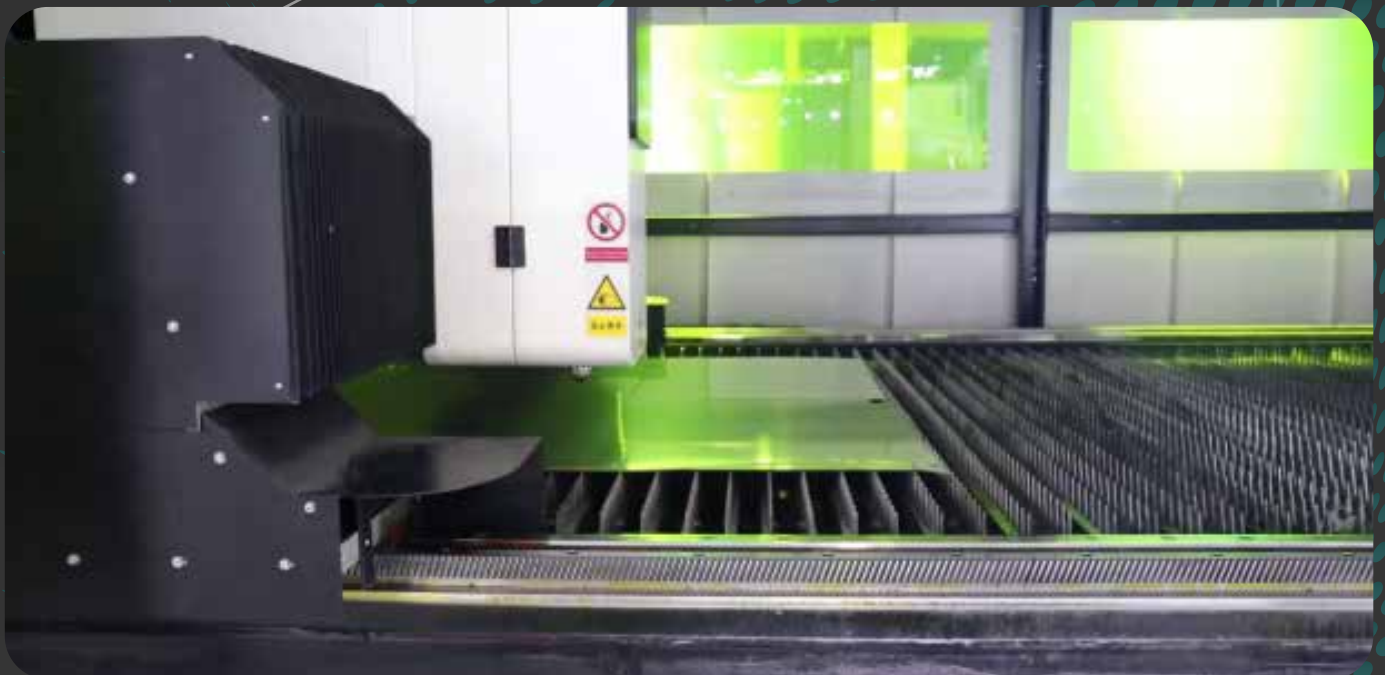
ROLLING MACHINE

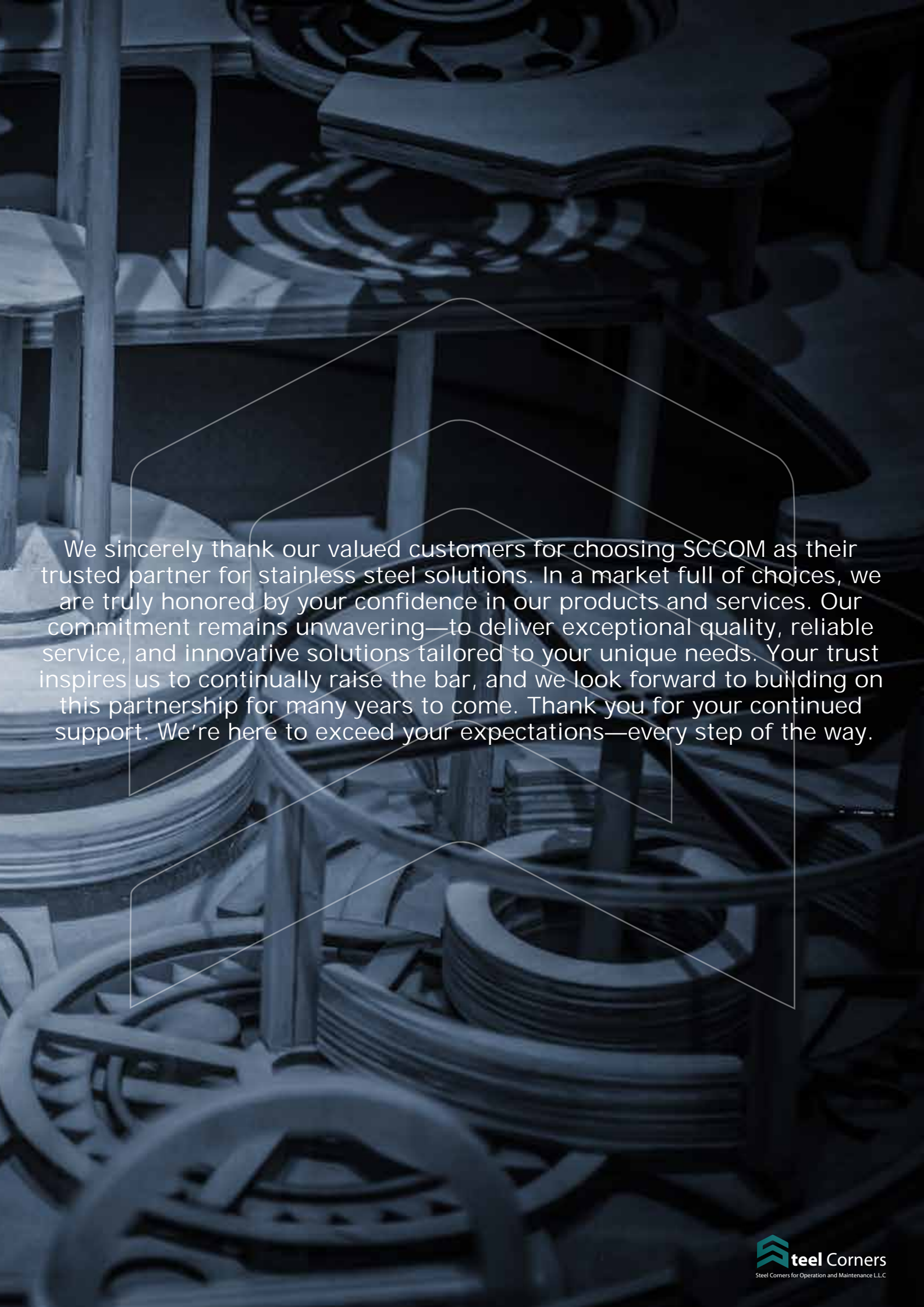


BENDING MACHINE



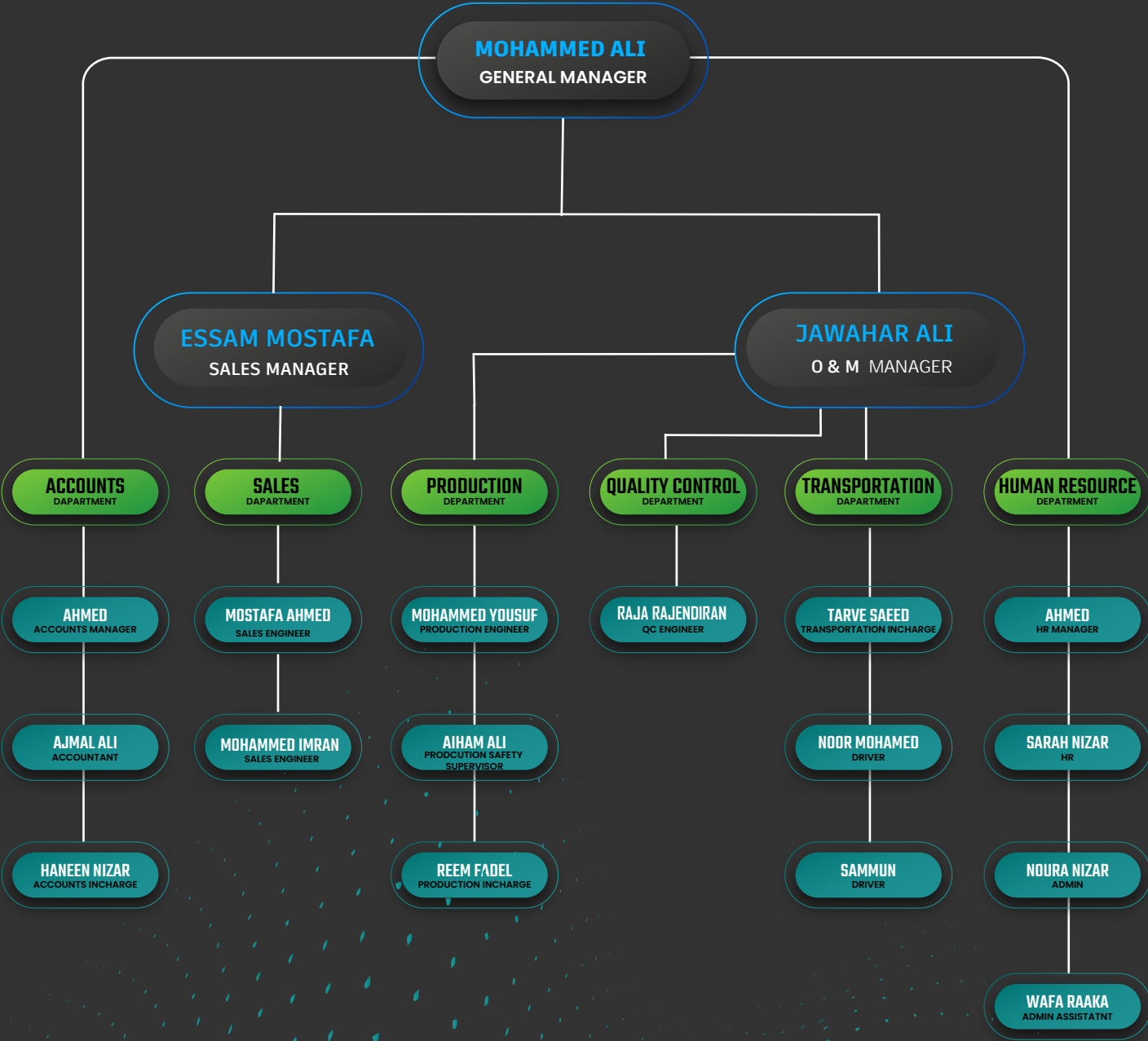
LASER MACHINE









We sincerely thank our valued customers for choosing SCCOM as their trusted partner for stainless steel solutions. In a market full of choices, we are truly honored by your confidence in our products and services. Our commitment remains unwavering—to deliver exceptional quality, reliable service, and innovative solutions tailored to your unique needs. Your trust inspires us to continually raise the bar, and we look forward to building on this partnership for many years to come. Thank you for your continued support. We're here to exceed your expectations—every step of the way.

STEEL CORNERS MANAGEMENT DEPARTMENT





 Tele : +966 557203021
 www.arkantekopm.com
 Inquiries@arkantekom.com
 P.O Box 7809, Riyadh 1284